



Original article

Elevated serum osteoprotegerin levels predict in-hospital major adverse cardiac events in patients with ST elevation myocardial infarction

Aytun Çanga (MD)^a, Murtaza Emre Durakoğlugil (MD)^{b,*}, Turan Erdoğan (MD)^b,
Aynur Kırbaş (MD)^c, Adnan Yılmaz (MD)^c, Yüksel Çiçek (MD)^b, Elif Ergül (MD)^a,
Mustafa Çetin (MD)^a, Sinan Altan Kocaman (MD)^a

^a Rize Education and Research Hospital, Department of Cardiology, Rize, Turkey

^b Rize University, Faculty of Medicine, Department of Cardiology, Rize, Turkey

^c Rize University, Faculty of Medicine, Department of Biochemistry, Rize, Turkey

ARTICLE INFO

Article history:

Received 29 March 2012

Received in revised form 23 April 2012

Accepted 12 May 2012

Available online 21 June 2012

Keywords:

ST elevation myocardial infarction

Osteoprotegerin

Reperfusion

Primary percutaneous coronary intervention

Major adverse cardiac events

C-reactive protein

ABSTRACT

The aim of our study was to investigate whether osteoprotegerin (OPG) is related to in-hospital major adverse cardiac events (MACE) and reperfusion parameters in patients with ST elevation myocardial infarction (STEMI). The OPG/receptor activator of nuclear factor- κ B (RANK)/RANK ligand pathway has recently been associated with atherosclerosis. OPG is a predictor of cardiovascular events in patients with acute coronary syndrome. This study included 96 consecutive patients with STEMI undergoing primary percutaneous coronary intervention (PCI). Two groups with equal number of patients were formed according to median OPG level. The association of OPG levels on admission with post-procedural reperfusion parameters, and in-hospital MACE were investigated. Patients with higher OPG levels displayed higher neutrophil/lymphocyte ratio, admission troponin, admission glucose, and high-sensitive C-reactive protein. Higher OPG levels were associated with increased thrombolysis in myocardial infarction (TIMI) risk score, TIMI risk index, pain to balloon time, need for inotropic support, shock, and MACE, mainly driven by death. Reperfusion parameters were not different between the two groups. TIMI risk score, TIMI risk index, myocardial blush grade, estimated glomerular filtration rate (eGFR), number of obstructed vessels, and OPG significantly predicted adverse cardiac events. Multiple logistic regression analysis revealed OPG as an independent predictor of MACE as well as eGFR, number of obstructed vessels, and corrected TIMI frame count. OPG, a bidirectional molecule displaying both atheroprotective and pro-atherosclerotic properties, is currently known as a marker of inflammation and a predictor of cardiovascular mortality. The present study, for the first time, demonstrated that an increased OPG level is related to in-hospital adverse cardiovascular events after primary PCI in patients with STEMI.

© 2012 Japanese College of Cardiology. Published by Elsevier Ltd. All rights reserved.

Introduction

Osteoprotegerin (OPG), a glycoprotein and a member of the tumor necrosis factor (TNF) receptor superfamily, forms the molecular link between skeletal, immune, and vascular systems [1,2]. OPG prevents osteoclast-mediated bone resorption, by binding the receptor activator of nuclear factor- κ B ligand (RANKL), acting as a decoy receptor to competitively inhibit the interaction of RANKL with its receptor, receptor activator of nuclear factor- κ B (RANK) [3]. In addition, OPG demonstrated anti-apoptotic activity by binding to another receptor of the TNF family, TNF-related

apoptosis-inducing ligand (TRAIL) [4]. Recently, OPG has gained considerable interest in the cardiovascular discipline due to its association with inflammation and atherosclerosis. Increased OPG levels have been associated with endothelial dysfunction [5], coronary calcium score [6], presence and severity of coronary artery disease (CAD) [7], peripheral vascular disease [8], and cerebrovascular disease [9].

ST elevation myocardial infarction (STEMI) is a major cause of cardiovascular mortality and morbidity. Despite advances in emergent revascularization including primary percutaneous coronary intervention (PCI), acute heart failure, shock, and mechanical complications are still encountered as major problems during hospital care [10,11]. The prognosis of STEMI is quite variable depending on a number of clinical, echocardiographic, and biochemical markers. Thus, identification of new molecules for risk stratification to select patients at high risk for adverse clinical end-points is important. In

* Corresponding author at: Rize University, Faculty of Medicine, Department of Cardiology, 53100 Rize, Turkey. Tel.: +90 464 212 30 09; fax: +90 464 212 30 15.

E-mail address: emredur@hotmail.com (M.E. Durakoğlugil).

addition, these molecules may help to reveal new aspects in the pathophysiology of acute and chronic vascular events.

Preliminary studies investigating the relationship between STEMI and OPG documented increased OPG levels in patients with STEMI compared to patients with stable CAD and normal controls [12]. Prominent immunostaining of OPG/RANK/RANKL were demonstrated within the thrombus material, aspirated during primary PCI for acute STEMI [13]. Although OPG is a strong predictor of mortality and heart failure (HF) in patients with acute coronary syndrome (ACS) [14], whether OPG is related to in-hospital major adverse cardiac events (MACE) and reperfusion parameters in patients with STEMI has not been clarified until now. We intended to investigate OPG levels in patients with STEMI and evaluate its relationship with reperfusion parameters and in-hospital MACE.

Methods

This study was conducted prospectively, in the cardiology clinic at Rize Education and Research Hospital, Rize, Turkey. Ninety six patients with STEMI with no history of previous CAD, who underwent primary PCI at our institution between May 2011 and January 2012, were enrolled consecutively. The diagnosis of acute STEMI was made as previously described [15]. The diagnosis of acute STEMI was also confirmed by demonstrating the culprit lesion by coronary angiography. Informed consent was obtained from all patients prior to the study. The study was performed in accordance with the principles stated in the Declaration of Helsinki and approved by the Local Ethics Committee.

Clinical characteristics, which consisted of multiple descriptors from each patient's history and physical examination, were collected by physicians from cardiology clinics of each patient and were stored in the database of the coronary angiography laboratory. We recorded the baseline characteristics, which include hypertension, diabetes mellitus, smoking status, family history of premature CAD and lipid parameters. Killip score [16], thrombolysis in myocardial infarction (TIMI) risk index [17], and TIMI risk score [18] was also calculated and used for risk stratification.

Patients with significant organic valvular heart disease, known history of CAD or prior MI, malignancy, collagen vascular disease, chronic kidney and hepatic failure, pulmonary embolism, and sepsis were excluded from the study. The exclusion criteria were selected to avoid confounding factors other than STEMI origin and location.

A 12-lead surface electrocardiogram (ECG) was obtained from all patients in the supine position immediately after their admission to the emergency care unit (ECU). The 12-lead ECG (Cardiofax S ECG-1250K, filter range 0.5–150 Hz, AC filter 60 Hz, 25 mm/s, 10 mm/mV; Nihon Kohden, Tokyo, Japan) was analyzed by two independent clinicians who were blind to study design and data. A repeat ECG was obtained 60 min after primary PCI. A special ruler was used to measure the difference (in mm) between isoelectric line and ST-segment elevation at 20 ms after the J-point. Jeopardized myocardium was determined by the sum of ST elevations (in mm) on each ST-elevated derivation on pre- and post-PCI ECGs (total ST elevation score). Percentage of total ST resolution was calculated by the following formula: $(\text{sum of ST elevations on pre-PCI ECG}) - (\text{sum of ST elevations on post-PCI ECG}) / (\text{sum of ST elevations on pre-PCI ECG}) \times 100$.

Cardiac biomarkers levels including creatine kinase (CK), CK-MB fraction (CK-MB), troponin-I, and inflammatory markers including leukocytes were measured at our emergency department and used in the analyses as admission values. The lipid samples were evaluated after fasting for at least 8 h. Glucose, creatinine, and lipid profile were determined by the standard methods. White blood

cell (WBC, leukocyte) counts were obtained from an automated cell counter (Coulter Gen-S, Coulter Corp., Miami, FL, USA). Estimated glomerular filtration rate (eGFR) was calculated by Cockcroft–Gault formula [19].

Blood samples for OPG were drawn prior to primary PCI and serum, isolated by centrifugation within 1 h at $2500 \times g$ for 10 min, and stored at -80°C . Serum levels of OPG were quantified by enzyme-linked immunosorbent assay (ELISA) using commercially available matched antibodies (eBioscience, San Diego, CA, USA). The intra-assay and inter-assay coefficients of variation (CV) were 7.0% and 8.0%, respectively. The sensitivity was calculated to be 2.5 pg/mL.

Admission serum specimens for high sensitivity C-reactive protein (hsCRP) were frozen at -20°C before analysis. Serum levels of hsCRP were determined by an immunoturbidimetric method performed on the Abbott auto-analyzer (Architect C1600, Abbott, Abbott Park, IL, USA).

All of the patients received 300 mg aspirin and a loading dose of 600 mg clopidogrel prior to the procedure. After sheath insertion via femoral approach, an intravenous bolus of unfractionated heparin at a dose of 70 IU/kg was administered. Coronary stenting directly, or after balloon angioplasty, was performed where eligible. Glycoprotein IIb/IIIa inhibitor (tirofiban) was administered at the preference of the operator. After the procedure, all patients were treated according to the current recommendations by clinicians blinded to OPG concentrations and followed-up in the coronary care unit and cardiology clinics until discharge. MACE were defined as recurrent myocardial infarction, stroke, decompensated HF, and cardiac death. In hospital re-infarction was defined as recurrent chest pain lasting more than 30 min, associated with new Q waves or recurrent ST-segment elevation ≥ 0.1 mV in at least two contiguous leads and an increase in CK-MB levels to at least twice the upper limit of normal value and/or more than 50% above the previous value after the index procedure.

Preprocedural and postprocedural TIMI flow grade [20], corrected TIMI frame count (TFC) [21], and myocardial blush grade [22] were assessed by two cardiologists blinded to patient data.

Statistical analyses

Continuous variables were given as mean \pm SD; categorical variables were defined as percentage. Data were tested for normal distribution using the Kolmogorov–Smirnov test. The Student's *t*-test was used for the univariate analysis of normally distributed continuous numerical variables and Mann–Whitney *U*-test was used for non-normally distributed numerical variables, and the χ^2 -test for the categorical variables. Spearman's rank correlation coefficient was used to analyze the relationship between numerical and ordinal variables. For presentation of data, two groups were formed as above and below the median OPG level. Moreover, additional groups were made up according to the presence or absence of MACE. Logistic regression analysis was used for multivariate analysis of independent variables. All tests of significance were two-tailed. Statistical significance was defined as $p < 0.05$. The Statistical Program for Social Sciences (SPSS for windows 15, Inc., Chicago, IL, USA) was used for all statistical calculations.

Results

The baseline clinical characteristics are presented in Table 1. The study population consisted of 96 patients with STEMI who underwent primary PCI. Blood samples were obtained within 30 min after admission, before administration of any medication. The mean plasma OPG level was 109 ± 134 pg/mL, with a median value of 70 pg/mL. The baseline clinical characteristics of the subgroups,

Table 1
Baseline demographics and clinical characteristics.

Characteristic (median OPG: 70 pg/mL) N (96)	OPG < median (48)	OPG ≥ median (48)	p-Value
Age (yrs)	53 ± 29	63 ± 34	<0.001
BMI (kg/m ²)	27.6 ± 4.1	27.8 ± 4.1	NS
Gender (male)	85%	79%	NS
Hypertension	35%	35%	NS
Diabetes mellitus	8%	29%	0.009
Smoking	69%	67%	NS
Hyperlipidemia	19%	17%	NS
Family history of premature CAD	15%	4%	0.080
Heart rate (bpm)	82 ± 15	82 ± 19	NS
Admission blood glucose (mg/dl)	145 ± 62	192 ± 137	0.025 ^a
Fasting blood glucose (mg/dl)	119 ± 40	148 ± 77	0.023
Creatinine (mg/dl)	0.93 ± 0.29	1.03 ± 0.32	NS ^a
eGFR (mL/min)	105 ± 34	83 ± 28	0.001
Total cholesterol (mg/dl)	184 ± 47	182 ± 41	NS
LDL (mg/dl)	120 ± 37	120 ± 35	NS
HDL (mg/dl)	37 ± 10	39 ± 8	NS
Triglyceride (mg/dl)	133 ± 80	119 ± 72	NS
Leukocytes (10 ³ /mm ³)	11 ± 3	13 ± 5	0.067
Neutrophils (10 ³ /mm ³)	7 ± 3	9 ± 5	0.024 ^a
Lymphocyte (10 ³ /mm ³)	2.9 ± 1.4	2.1 ± 1.1	0.002 ^a
Monocyte (/mm ³)	0.68 ± 0.26	0.68 ± 0.35	NS ^a
N/L ratio	3.4 ± 3.2	5.4 ± 4.0	0.007
Hemoglobin (mg/dl)	14.4 ± 1.4	13.4 ± 1.4	0.001
Platelet count (10 ⁹ /L)	260 ± 57	245 ± 54	NS
CK-MB (U/L) (Adm.)	25 ± 63	50 ± 81	0.098
CK-MB (U/L) (peak)	210 ± 96	213 ± 100	NS ^a
Troponin I (ng/mL) (Adm.)	2.8 ± 8.2	10.1 ± 16.9	0.012
Troponin I (ng/mL) (peak)	45 ± 11	46 ± 11	NS ^a
C-reactive protein (mg/dl)	0.83 ± 1.23	2.1 ± 3.6	0.002 ^a
Q wave on ECG %	61%	74%	NS
Left ventricular ejection fraction (%)	44 ± 10	43 ± 10	NS
Medications			
Aspirin	13%	21%	NS
Clopidogrel	0%	4%	NS
Beta blockers	6%	17%	NS
Statins	4%	13%	NS
ACEI/ARB	23%	17%	NS
CCB	6%	15%	NS
Tirofiban	10%	21%	NS
OAD/insulin	8%	21%	NS

ACEI/ARB, angiotensin-converting enzyme inhibitors/angiotensin receptor blockers; Adm., admission value; BMI, body mass index; CAD, coronary artery disease; CCB, calcium channel blocker; CK, creatinine kinase; CK-MB, creatinine kinase muscle/brain; ECG, electrocardiogram; eGFR, estimated glomerular filtration rate; HDL, high-density lipoprotein; LDL, low-density lipoprotein; N/L, neutrophil/lymphocyte; NS, not significant; OAD, oral anti-diabetic; OPG, osteoprotegerin; PCI, percutaneous coronary intervention.

^a Nonparametric variables were analyzed by Mann–Whitney *U*-test.

with OPG levels higher and lower than the median, are compared in Table 1. Patients with higher OPG levels were more likely to be older, to have history of diabetes mellitus, to have lower hemoglobin levels, and eGFR. In addition, in patients with higher OPG, higher values of leukocyte count, neutrophil/lymphocyte (*N/L*) ratio, admission troponin, admission glucose, CRP, and hsCRP were also documented.

Angiographic characteristics and procedural results are detailed in Table 2. Higher OPG levels were associated with increased TIMI risk score ($p=0.001$), TIMI risk index ($p=0.001$), pain to balloon time ($p=0.014$), need for inotropic support ($p=0.014$), shock ($p=0.011$), and MACE ($p=0.009$), mainly driven by increased mortality in this group ($p=0.011$) (Fig. 1). There was a trend for increased decompensated HF, although not reaching significance. Reperfusion parameters including TIMI flow grade, corrected TFC, myocardial blush grade, and percentage of ST segment resolution was not different between the two groups. Correlation analysis

Table 2
Angiographic characteristics and procedural results.

Characteristic	OPG < median	OPG ≥ median	p-Value
<i>Pre-procedural characteristics</i>			
TIMI risk score	3.3 ± 2.7	5.4 ± 2.8	0.001
TIMI risk index	21 ± 11	31 ± 16	0.001
Pain to balloon time (min)	278 ± 234	439 ± 374	0.001 ^a
Baseline TIMI grade 0 or 1	89%	85%	NS
Thrombus score 4 or 5	96%	90%	NS
Anterior MI	48%	48%	NS
Total ST elevation on admission (mm)	9.5 ± 7.3	10.4 ± 7.6	NS ^a
Number of obstructed vessels ≥50%	2.0 ± 0.8	2.2 ± 0.8	NS ^a
<i>Post-procedural results</i>			
TIMI flow grade (2, 3)	94%	90%	NS
Corrected TIMI frame count	27 ± 21	30 ± 24	NS ^a
Myocardial blush grade (2, 3)	73%	63%	NS
ST resolution %	56 ± 52	53 ± 33	NS ^a
<i>In-hospital course</i>			
MACE	8%	29%	0.009
Death	0%	13%	0.011
Re-MI	4%	10%	NS
Stroke	0%	0%	NS
Decompensated HF	6%	19%	0.064
Shock	0%	13%	0.011
Need for inotropic support	2%	17%	0.014
CPR	0%	19%	0.002
Atrial fibrillation	6%	10%	NS
Major/minor bleeding	4%	8%	NS
Pre-PCI cardiac arrest	2%	13%	0.05
VT/VF	4%	8%	NS

CPR, cardiopulmonary resuscitation; HF, heart failure; MACE, major adverse cardiac event; MI, myocardial infarction; OPG, osteoprotegerin; PCI, percutaneous coronary intervention; TIMI, thrombolysis in myocardial infarction; VF, ventricular fibrillation; VT, ventricular tachycardia.

^a Nonparametric variables were analyzed by Mann–Whitney *U*-test.

demonstrated that OPG related to *N/L* ratio ($r=0.364$, $p<0.001$), and hsCRP ($r=0.337$, $p=0.001$) significantly.

Female gender, plasma creatinine, glucose, hemoglobin, neutrophil/leukocyte count, eGFR, left ventricular ejection fraction (LVEF), TIMI risk score, Killip score, TIMI risk index, myocardial blush grade, number of obstructed vessels, corrected TFC, and OPG significantly predicted adverse cardiac events (Table 3). Multiple logistic regression analysis including age, gender, eGFR, hemoglobin, admission glucose level, *N/L* ratio, number of obstructed vessels ≥50%, corrected TFC, hs-CRP, LVEF, and OPG levels revealed OPG as an independent predictor of MACE (odds ratio: 1.008, 95% CI: 1.003–1.015, $p=0.016$) as well as eGFR, number of obstructed vessels, and corrected TFC (Table 4).

Discussion

We demonstrated for the first time that increased OPG levels are associated with higher in-hospital MACE in patients with STEMI. Higher OPG concentrations also indicated increased TIMI risk score, pain to balloon time, need for inotropic support, shock, and hsCRP potentially delineating a high-risk group. Furthermore, corrected TFC and myocardial blush grade did not differ significantly between the two groups, formed according to OPG levels. Despite the lack of association with reperfusion parameters, OPG correlated with hsCRP, *N/L* ratio, and remained as the strongest independent parameter in the multivariate analysis.

Data regarding the relationship between STEMI and OPG in the current medical literature are scarce. A previous study documented increased OPG levels in patients with STEMI compared to patients with CAD and normal controls [12]. Prominent immunostaining of OPG/RANK/RANKL were demonstrated within the thrombus material, aspirated during primary PCI for acute STEMI, implicating a

Table 3
Relationship of major adverse cardiovascular events with prognostic parameters in study.

Parameters	Major adverse cardiovascular events		p-Value
	Absence	Presence	
Age (yrs)	60 ± 13	66 ± 10	0.062
BMI (kg/m ²)	27 ± 4	28 ± 6	NS
Gender (male)	87%	65%	0.023
Hypertension	34%	50%	NS
Diabetes mellitus	16%	30%	NS
Smoking	73%	50%	NS
Hyperlipidemia	16%	20%	NS
Family history of CAD	10%	5%	NS
Heart rate (bpm)	80 ± 17	86 ± 21	NS
Creatinine (mg/dl)	0.9 ± 0.3	1.3 ± 0.6	0.001 ^a
eGFR (mL/min)	98 ± 32	69 ± 31	0.001
Admission blood glucose (mg/dl)	154 ± 72	219 ± 183	0.017 ^a
Fasting blood glucose (mg/dl)	124 ± 52	166 ± 72	0.076
Leukocytes (10 ³ /mm ³)	11 ± 3	15 ± 7	0.005
Neutrophils (10 ³ /mm ³)	7 ± 3	12 ± 7	0.005 ^a
Hemoglobin (mg/dl)	14.1 ± 1.5	13.3 ± 1.8	0.06
EF%	45 ± 10	39 ± 8	0.012
Troponin I (peak)	1.6 ± 0.2	1.7 ± 0.1	NS ^a
HsCRP	-0.3 ± 0.5	-0.1 ± 0.7	NS ^a
N/L ratio	3.9 ± 3.0	6.2 ± 5.4	0.079
Killip score	1.1 ± 0.3	2.1 ± 1.0	<0.001
TIMI risk score	3.8 ± 2.5	7.5 ± 3.1	<0.001
TIMI risk index	23 ± 11	40 ± 18	0.001
Osteoprotegerin (pg/mL)	85 ± 66	215 ± 257	0.002 ^a
Total ST elevation on admission (mm)	10 ± 7	12 ± 10	NS ^a
ST segment resolution %	54 ± 45	60 ± 30	NS ^a
Corrected TIMI frame count	26 ± 19	44 ± 31	0.001 ^a
Myocardial blush grade (2, 3)	72%	50%	0.018
Number of obstructed vessels ≥50%	2.0 ± 0.8	2.5 ± 0.8	0.012 ^a

BMI, body mass index; CAD, coronary artery disease; EF, ejection fraction; eGFR, estimated glomerular filtration rate; HsCRP, high-sensitivity C-reactive protein; N/L, neutrophil/lymphocyte; TIMI, thrombolysis in myocardial infarction.

^a Nonparametric variables were analyzed by Mann–Whitney *U*-test.

potential causative role [13]. Previous studies identified OPG as an independent predictor of HF and mortality in patients with myocardial infarction complicated with HF and ACS [14,23]. Moreover, higher OPG levels were associated with a larger infarct size after STEMI [24].

In the present study, despite the documented association between increased OPG levels and in-hospital MACE in patients with STEMI, the exact cause of this relationship is still unknown. Whether OPG has an independent active pathophysiologic effect or is just a marker of severity has not been clarified. In vitro studies identified OPG to have anti-atherosclerotic properties by inhibiting vascular calcification, regulating B-cell maturation, and demonstrating anti-apoptotic activity [1,25]. However, regardless of the convincing evidence for antiatherogenic effects in animal models, OPG seems to be associated with CAD and a marker of mortality in human studies [9,26]. There may be several explanations for this association. Endothelial and vascular smooth muscle cells secrete OPG in response to TNF- α [27]. Previous studies reported increased expression of RANK in monocytes, RANKL mRNA in T-cells in patients with unstable angina, and OPG/RANK/RANKL specifically in the atherosclerotic plaques. Moreover, supported with the evidence that RANKL increases matrix metalloproteinase (MMP) activity, OPG/RANK/RANKL axis seems to be a crucial factor in unstable coronary syndromes [13]. Therefore, OPG alone may not be effective in neutralizing RANK/RANKL interaction, particularly at high RANKL concentrations. In addition, binding of OPG may possibly hinder clearance of RANKL which increases RANKL actions. Thus, higher OPG concentration, corresponding to a low OPG/RANKL ratio, could indicate overall activity in the OPG/RANK/RANKL system.

In contrast to protective properties, higher OPG levels are associated with increased endothelial cell adhesion and migration of inflammatory cells [28], enhanced MMP-mediated matrix degradation [13], diminished endothelial nitric oxide synthase activity [29], and blocked potential anti-inflammatory activity of TRAIL [30];

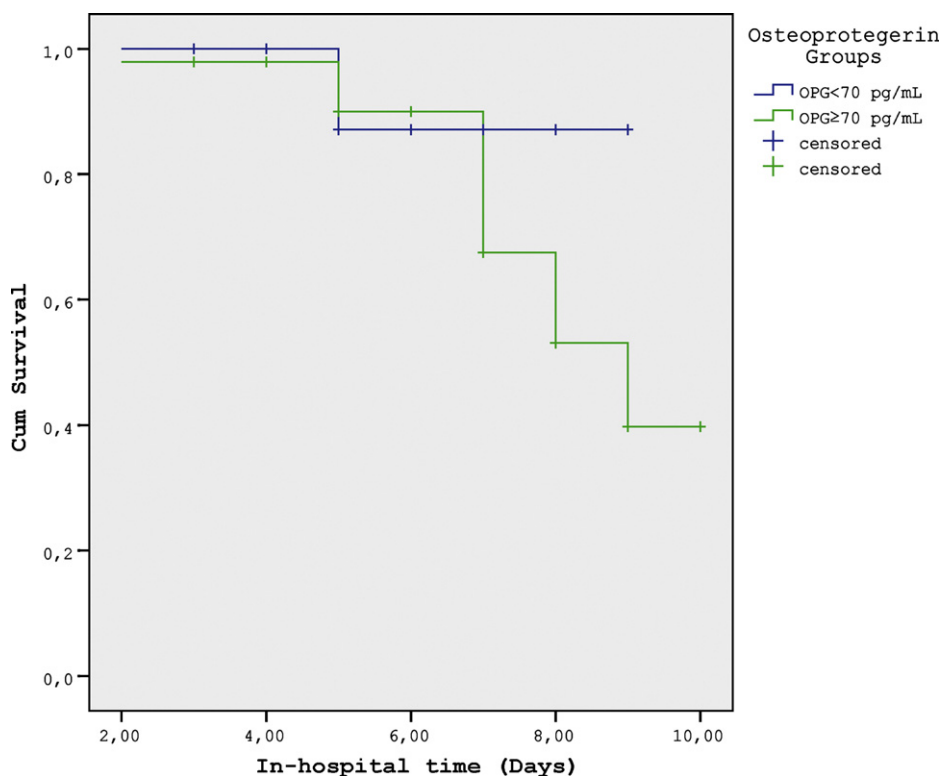


Fig. 1. Kaplan–Meier survival plot documenting increased major adverse cardiac event rate in patients with higher osteoprotegerin (OPG) concentrations; Cum, cumulative.

Table 4
Multivariate logistic regression analysis: predictors for major adverse cardiovascular events.

Predictors	OR	95% CI	p-value ^a	OR	95% CI	p-Value ^a
<i>Major adverse cardiovascular events</i>						
Age (yrs)	0.996	0.916–1.082	0.918			
Gender (male)	0.384	0.041–3.575	0.400			
Admission blood glucose (mg/dl)	0.999	0.991–1.007	0.868			
Hemoglobin (mg/dl)	1.549	0.713–3.365	0.269			
eGFR (mL/min)	0.950	0.905–0.997	0.037	0.971	0.944–0.999	0.042
N/L ratio	0.960	0.800–1.153	0.663			
C-reactive protein (mg/dl)	1.278	0.957–1.707	0.096			
Osteoprotegerin (pg/mL)	1.011	1.001–1.021	0.034	1.008	1.003–1.015	0.016
LVEF (%)	0.935	0.850–1.030	0.173			
Number of obstructed vessels $\geq 50\%$	2.974	0.928–9.536	0.067	2.906	1.051–8.037	0.040
Corrected TIMI frame count	1.039	1.006–1.073	0.021	1.039	1.011–1.069	0.006
Constant	0.009	–	0.497	0.020	–	0.041
R ²	0.593			0.516		

CI, confidence interval; eGFR, estimated glomerular filtration rate; LVEF, left ventricular ejection fraction; N/L, neutrophil/lymphocyte; OR, odds ratio; TIMI, thrombolysis in myocardial infarction.

^a Logistic regression analysis with Backward: LR method was used for multivariate analysis of independent causative variables including age, gender, eGFR, hemoglobin, admission glucose level, N/L ratio, number of obstructed vessels $\geq 50\%$, corrected TIMI frame count, high-sensitivity C-reactive protein, LVEF, and osteoprotegerin levels; and after pre-elimination with Enter method.

all in favor of an advanced atherosclerotic process. Consequently, increased OPG concentration may be an ineffective compensatory mechanism in order to heal vascular insult, and a marker of inflammation in cardiovascular disease. Similarly, hsCRP and N/L ratio was increased in patients with higher OPG levels and correlated to OPG in our study.

A recent study, investigating the relationship between microvascular perfusion and higher OPG levels, revealed increased angiographic no-reflow, microvascular obstruction, and microcirculatory resistance after primary PCI in patients with STEMI [31]. We could not demonstrate a significant association between OPG and reperfusion parameters in our study. However, we did not measure index of microcirculatory resistance, a better marker of microvascular obstruction, as in the referenced study.

Our study includes a small group of patients, which could have diminished the statistical significance of relationship between reperfusion and acute decompensated HF. In addition, we could not measure RANKL level, however OPG may be a more reliable and stable marker of OPG/RANKL/RANK activity [2].

OPG, a multifaceted molecule displaying both atheroprotective and pro-atherosclerotic properties, is a marker of inflammation and a predictor of cardiovascular mortality. We, for the first time, demonstrated that increased OPG level is related to in-hospital adverse cardiovascular events after primary PCI in patients with STEMI.

Conflict of interest

The authors do not declare any conflict of interest.

References

- Van Campenhout A, Golledge J. Osteoprotegerin, vascular calcification and atherosclerosis. *Atherosclerosis* 2009;204:321–9.
- Venuraju SM, Yerramasu A, Corder R, Lahiri A. Osteoprotegerin as a predictor of coronary artery disease and cardiovascular mortality and morbidity. *J Am Coll Cardiol* 2010;55:2049–61.
- Hsu H, Lacey DL, Dunstan CR, Solovyev I, Colombero A, Timms E, Tan HL, Elliott G, Kelley MJ, Sarosi I, Wang L, Xia XZ, Elliott R, Chiu L, Black T, et al. Tumor necrosis factor receptor family member RANK mediates osteoclast differentiation and activation induced by osteoprotegerin ligand. *Proc Natl Acad Sci USA* 1999;96:3540–5.
- LeBlanc HN, Ashkenazi A. Apo2L/TRAIL and its death and decoy receptors. *Cell Death Differ* 2003;10:66–75.
- Xiang GD, Xu L, Zhao LS, Yue L, Hou J. The relationship between plasma osteoprotegerin and endothelium-dependent arterial dilation in type 2 diabetes. *Diabetes* 2006;55:2126–31.
- Abidin M, Omland T, Ueland T, Khera A, Aukrust P, Murphy SA, Jain T, Gruntnan U, McGuire DK, de Lemos JA. Relation of osteoprotegerin to coronary calcium and aortic plaque (from the Dallas Heart Study). *Am J Cardiol* 2007;99:513–8.
- Jono S, Ikari Y, Shioi A, Mori K, Miki T, Hara K, Nishizawa Y. Serum osteoprotegerin levels are associated with the presence and severity of coronary artery disease. *Circulation* 2002;106:1192–4.
- Ziegler S, Kudlacek S, Luger A, Minar E. Osteoprotegerin plasma concentrations correlate with severity of peripheral artery disease. *Atherosclerosis* 2005;182:175–80.
- Kiechl S, Schett G, Wenning G, Redlich K, Oberhollenzer M, Mayr A, Santer P, Smolen J, Poewe W, Willeit J. Osteoprotegerin is a risk factor for progressive atherosclerosis and cardiovascular disease. *Circulation* 2004;109:2175–80.
- Hachinohe D, Jeong MH, Saito S, Kim MC, Cho KH, Ahmed K, Hwang SH, Lee MG, Sim DS, Park KH, Kim JH, Hong YJ, Ahn Y, Kang JC, Chae SC, et al. Clinical impact of thrombus aspiration during primary percutaneous coronary intervention: Results from Korea Acute Myocardial Infarction Registry. *J Cardiol* 2012;59:249–57.
- Cho YW, Jang JS, Jin HY, Seo JS, Yang TH, Kim DK, Kim DI, Lee SH, Cho YK, Kim DS. Relationship between symptom-onset-to-balloon time and long-term mortality in patients with acute myocardial infarction treated with drug-eluting stents. *J Cardiol* 2011;58:143–50.
- Crisafulli A, Micari A, Altavilla D, Saporito F, Sardella A, Passaniti M, Raffa S, D'Anneo G, Luca F, Mioni C, Arrigo F, Squadrito F. Serum levels of osteoprotegerin and RANKL in patients with ST elevation acute myocardial infarction. *Clin Sci (Lond)* 2005;109:389–95.
- Sandberg WJ, Yndestad A, Oie E, Smith C, Ueland T, Ovchinnikova O, Robertsson AK, Muller F, Semb AG, Scholz H, Andreassen AK, Gullestad L, Damas JK, Froland SS, Hansson GK, et al. Enhanced T-cell expression of RANK ligand in acute coronary syndrome: possible role in plaque destabilization. *Arterioscler Thromb Vasc Biol* 2006;26:857–63.
- Omland T, Ueland T, Jansson AM, Persson A, Karlsson T, Smith C, Herlitz J, Aukrust P, Hartford M, Caidahl K. Circulating osteoprotegerin levels and long-term prognosis in patients with acute coronary syndromes. *J Am Coll Cardiol* 2008;51:627–33.
- Thygesen K, Alpert JS, White HD, Jaffe AS, Apple FS, Galvani M, Katus HA, Newby LK, Ravkilde J, Chaitman B, Clemmensen PM, Dellborg M, Hod H, Porela P, Underwood R, et al. Universal definition of myocardial infarction. *Circulation* 2007;116:2634–53.
- Killip 3rd T, Kimball JT. Treatment of myocardial infarction in a coronary care unit. A two year experience with 250 patients. *Am J Cardiol* 1967;20:457–64.
- Morrow DA, Antman EM, Giugliano RP, Cairns R, Charlesworth A, Murphy SA, de Lemos JA, McCabe CH, Braunwald E. A simple risk index for rapid initial triage of patients with ST-elevation myocardial infarction: an InTIME II substudy. *Lancet* 2001;358:1571–5.
- Morrow DA, Antman EM, Charlesworth A, Cairns R, Murphy SA, de Lemos JA, Giugliano RP, McCabe CH, Braunwald E. TIMI risk score for ST-elevation myocardial infarction: a convenient, bedside, clinical score for risk assessment at presentation: an intravenous nPA for treatment of infarcting myocardium early II trial substudy. *Circulation* 2000;102:2031–7.
- Cockcroft DW, Gault MH. Prediction of creatinine clearance from serum creatinine. *Nephron* 1976;16:31–41.
- The thrombolysis in myocardial infarction (TIMI) trial. Phase I findings. TIMI Study Group. *N Engl J Med* 1985;312:932–6.
- Gibson CM, Murphy SA, Rizzo MJ, Ryan KA, Marble SJ, McCabe CH, Cannon CP, Van de Werf F, Braunwald E. Relationship between TIMI frame count and clinical outcomes after thrombolytic administration. Thrombolysis in myocardial infarction (TIMI) study group. *Circulation* 1999;99:1945–50.

- [22] Gibson CM, Cannon CP, Murphy SA, Ryan KA, Mesley R, Marble SJ, McCabe CH, Van De Werf F, Braunwald E. Relationship of TIMI myocardial perfusion grade to mortality after administration of thrombolytic drugs. *Circulation* 2000;101:125–30.
- [23] Ueland T, Jemtland R, Godang K, Kjekshus J, Hognestad A, Omland T, Squire IB, Gullestad L, Bollerslev J, Dickstein K, Aukrust P. Prognostic value of osteoprotegerin in heart failure after acute myocardial infarction. *J Am Coll Cardiol* 2004;44:1970–6.
- [24] Andersen GO, Knudsen EC, Aukrust P, Yndestad A, Oie E, Muller C, Seljeflot I, Ueland T. Elevated serum osteoprotegerin levels measured early after acute ST-elevation myocardial infarction predict final infarct size. *Heart* 2011;97:460–5.
- [25] Yun TJ, Tallquist MD, Aicher A, Rafferty KL, Marshall AJ, Moon JJ, Ewings ME, Mohaupt M, Herring SW, Clark EA. Osteoprotegerin a crucial regulator of bone metabolism, also regulates B cell development and function. *J Immunol* 2001;166:1482–91.
- [26] Lieb W, Gona P, Larson MG, Massaro JM, Lipinska I, Keaney Jr JF, Rong J, Corey D, Hoffmann U, Fox CS, Vasan RS, Benjamin EJ, O'Donnell CJ, Kathiresan S. Biomarkers of the osteoprotegerin pathway: clinical correlates, subclinical disease, incident cardiovascular disease, and mortality. *Arterioscler Thromb Vasc Biol* 2010;30:1849–54.
- [27] Collin-Osdoby P, Rothe L, Anderson F, Nelson M, Maloney W, Osdoby P. Receptor activator of NF-kappa B and osteoprotegerin expression by human microvascular endothelial cells, regulation by inflammatory cytokines, and role in human osteoclastogenesis. *J Biol Chem* 2001;276:20659–72.
- [28] Mangan SH, Van Campenhout A, Rush C, Golledge J. Osteoprotegerin upregulates endothelial cell adhesion molecule response to tumor necrosis factor-alpha associated with induction of angiotensin-2. *Cardiovasc Res* 2007;76:494–505.
- [29] Secchiero P, Corallini F, Pandolfi A, Consoli A, Candido R, Fabris B, Celeghini C, Capitani S, Zauli G. An increased osteoprotegerin serum release characterizes the early onset of diabetes mellitus and may contribute to endothelial cell dysfunction. *Am J Pathol* 2006;169:2236–44.
- [30] Secchiero P, Candido R, Corallini F, Zacchigna S, Toffoli B, Rimondi E, Fabris B, Giacca M, Zauli G. Systemic tumor necrosis factor-related apoptosis-inducing ligand delivery shows antiatherosclerotic activity in apolipoprotein E-null diabetic mice. *Circulation* 2006;114:1522–30.
- [31] Erkol A, Pala S, Kirma C, Oduncu V, Dundar C, Izgi A, Tigen K, Gibson CM. Relation of circulating osteoprotegerin levels on admission to microvascular obstruction after primary percutaneous coronary intervention. *Am J Cardiol* 2011;107:857–62.